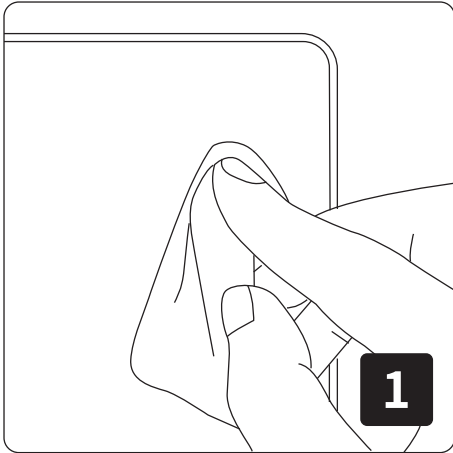
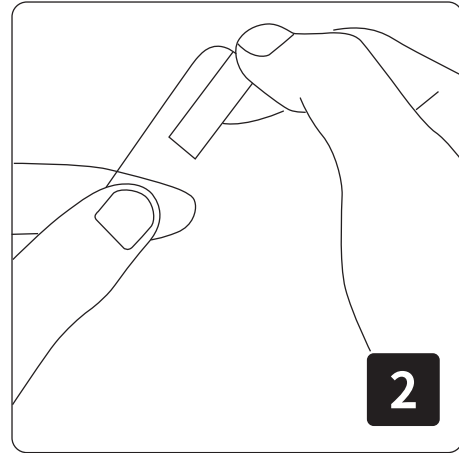


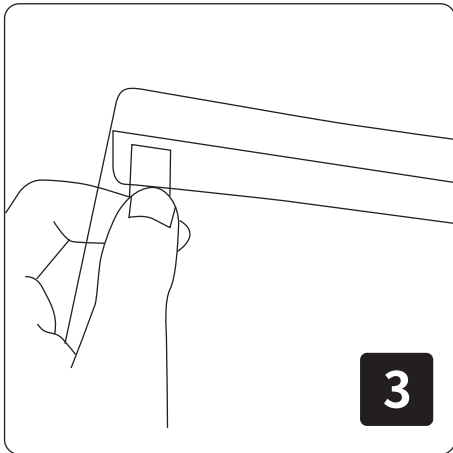
Installation Notes



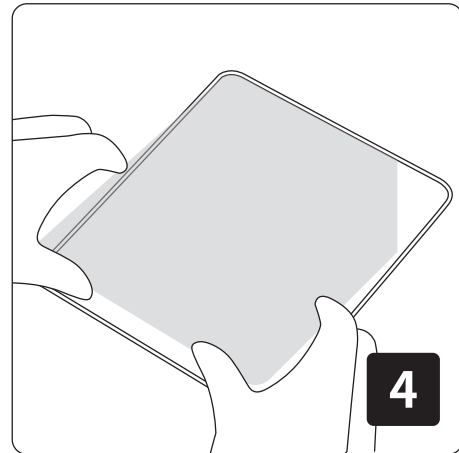
Clean the screen of your device with a lint free cleaning wipe or cloth



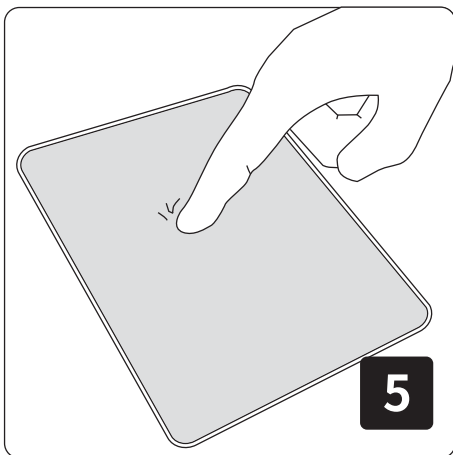
Locate the pull tab of the protective film on the back of the tempered glass protector



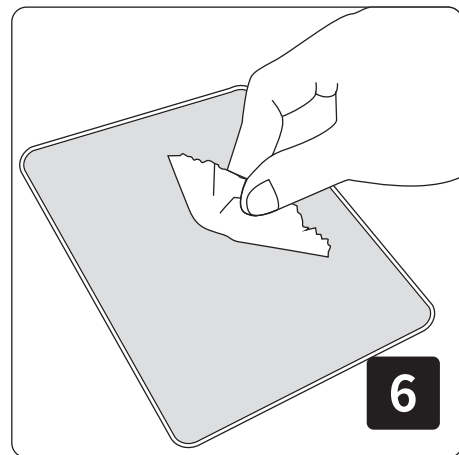
Peel the protective film from the back of the tempered glass



Align the tempered glass over the device screen and carefully placed on the device



Gently press the tempered glass and watch the silicone adhesive automatically bond to the device screen



If there are any bubbles visible, use the cleaning cloth to gently squeeze the bubbles out