

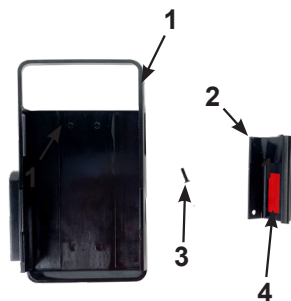
Toughmate G1 mPos Integration Kit



Introduction

The G1 mPos Integration Kit converts the Panasonic TOUGHBOOK G1 and your mPos device into a mobile payment terminal that delivers an intuitive and efficient workflow experience.

Features



- 1) mPos Case (iSMP4 shown)
- 2) Rail Piece
- 3) Screw
- 4) Double Sided-Adhesive

1

First, begin by inserting your mPos device (iSMP4 pictured) into your case (1). Do so by sliding the device up from the bottom shown to the left.

2

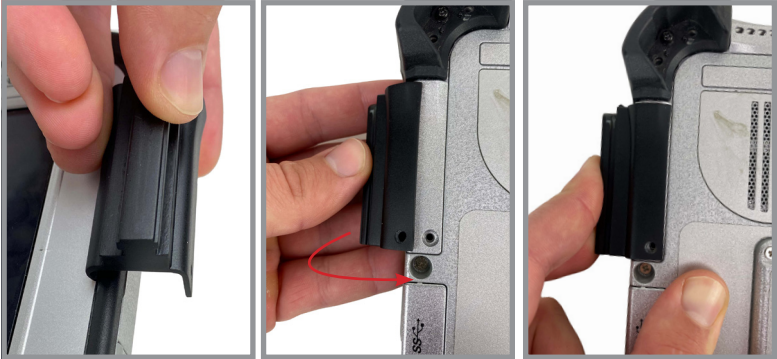
Unscrew the device screw on the G1 (pictured below). It is located above the HDMI, USB, and audio jack ports. Note it is NOT the screw in the debossed cavity.

**3**

Remove film on double sided adhesive (4) on the inside of the rail piece (2).

4

Align rail piece (2) so that the front hooks around the front lip of the G1 shown below. Wrap rail piece around the device so that the screw holes align. Note that the round end of the rail should be facing towards the top corner as shown below.



5

Use screw (3) to secure the rail piece (2) to the device.



6

To install the mPos case (1), simply slide it down the rail piece (2) until the clicks into place. The screen of your mPos device and the G1 screen should be facing the same direction.



Tips for use

- If needed, your mPos in the case can be removed by pulling it up and off of the rail.
- Our Toughmate User Harness can optionally be worn when using this solution.

Warranty

InfoCase products are dynamic, consistently improved and reinvented to bring you the best products on the market. We use only the highest quality materials to meet your mobile technology demands.

InfoCase offers a warranty on defects and workmanship on this product. Please visit: <http://www.InfoCase.com/warranty> or call 1-800-248-4844 to obtain more information on the InfoCase warranty.