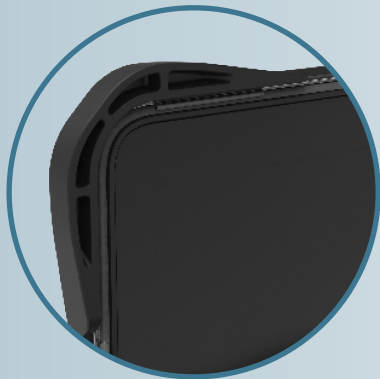


Lenovo 3PO

Rugged Snap-On Case Providing Drop and Shock Protection



Air Cell Protection



Always
Accessible Ports



Full Range of Motion
for 300/500 and Yoga series



Cushioned Non-Slip Corners

Supports:



Ultimate in lightweight, always on protection. This case is designed with education and business use in mind. The precision fit protective case mitigates device damage, down time and total cost of ownership.

InfoCase Part #

- AO-SNP-L100G4
- AO-SNP-L300G4
- AO-SNP-L500G4
- AO-SNP-YOGA13W-G2
- AO-SNP-L14G3
- AO-SNP-L13YG4
- AO-SNP-L100E-INT

Fits Device:

- Lenovo 100e/100w Gen 4
- Lenovo 300e/300w Gen 4
- Lenovo 500e/500w Gen 4
- Lenovo 13W Yoga G1 & G2
- Lenovo 14e G3
- Lenovo L13 Yoga G4
- Lenovo 100e G4 Touch