

## Rugged Snap-On Case for Microsoft Surface Pro 8-10



Ultimate in lightweight, always on protection, this precision fit protective case mitigates device damage, down time and total cost of ownership to keep it in the hands of your students. Designed to handle the rough and tumble school environment, our durable case offers military-grade drop protection while making the device easier to use and carry.

### Surface Pro 8

InfoCase Part #: AO-CC-MSSP8

List Price: \$49.95

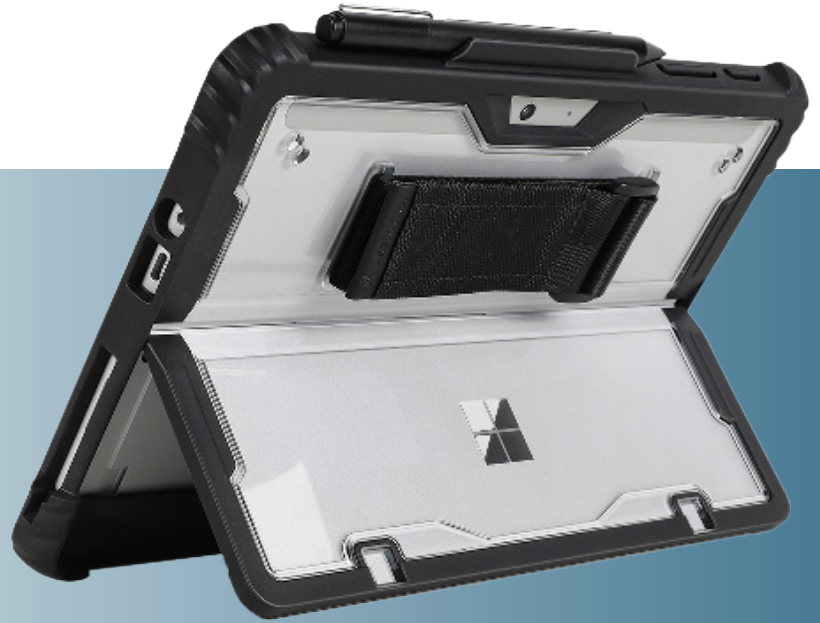
### Surface Pro 9 and 10

InfoCase Part #: AO-CC-MSSP9

List Price: \$49.95

### Features:

- Lightweight and MIL-STD810H drop tested
- Integrated adjustable hand strap
- Compatible with device easel kickstand
- Rib & cell protection with reinforced corners
- Clear polycarbonate for asset tag visibility
- Built-in stylus pen holder
- Open access to all I/O ports



### Pair With Screen Protection:

- Tempered Glass
  - INF-SG-MSSP89



## Rugged Snap-On Case for Microsoft Surface Pro 8-10 and Surface Go 1-4



Ultimate in lightweight, always on protection, this precision fit protective case mitigates device damage, down time and total cost of ownership. Designed for use in highly mobile and rugged environments, our durable case offers a variety of features that facilitate improved device handling and carrying to increase workflow efficiency.

### Surface Pro 8

InfoCase Part #: AO-CC-MSSP8

List Price: \$49.95

### Surface Pro 9 and 10

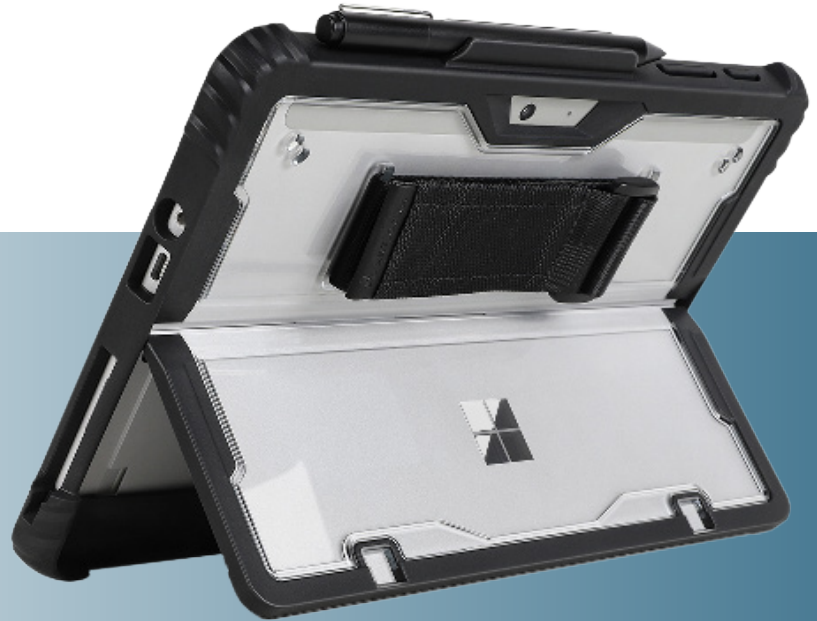
InfoCase Part #: AO-CC-MSSP9

List Price: \$49.95

### Surface Go 1, 2, 3, and 4

InfoCase Part #: AO-CC-MSSGO3

List Price: \$49.99



### Features:

- Lightweight and MIL-STD810H drop tested
- Integrated adjustable hand strap
- Compatible with device easel kickstand
- Rib & cell protection with reinforced corners
- Clear polycarbonate for asset tag visibility
- Built-in stylus pen holder
- Open access to all I/O ports

### Pair With Screen Protection:

- Tempered Glass - INF-SG-MSSP89
- Privacy Protection - INF-PF-MSSP89

