

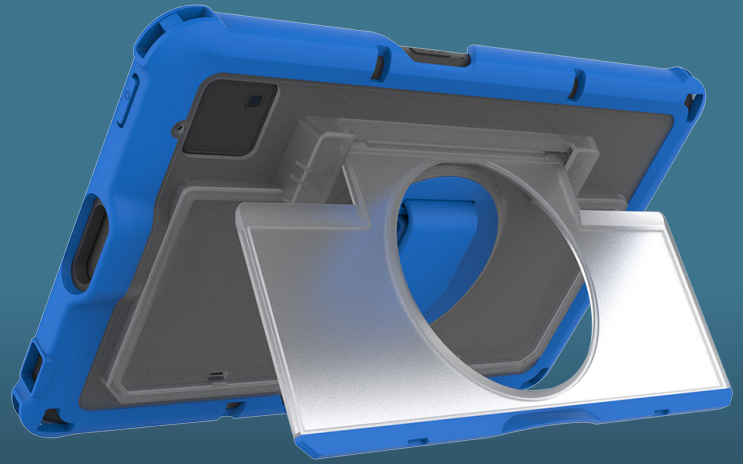
ErGo Pro HC Case for Zebra ET401 Tablets

ET401 8" with Scanner

PART NUMBER: FM-HCC-ET40X8
MSRP: \$79.99

ET401 10" with Scanner

PART NUMBER: FM-HCC-ET40X10
MSRP: \$89.99



Purpose Built for Healthcare Workflows

Healthcare professionals need technology that moves as quickly as they do. The ErGo Pro HC Case is specifically designed for hospitals, clinics, and other patient care environments where mobility, durability, long-term care facilities, and infection control are critical. Constructed with healthcare-grade materials and MIL-STD-810H drop tested for rugged protection, the case helps safeguard devices from the drops, bumps, and daily wear common in fast-paced clinical settings. The result is greater device uptime, fewer workflow interruptions, and more reliable access to critical patient information.



Key Features

- Made with Mirathane TPU, Makrolon polycarbonate and FDA-grade silicone for sanitary use in healthcare environments
- FDA-grade silicone hand strap rotates full 360°
- Built-in friction-hinged easel stand for adjustable viewing angles
- Corner anchor points facilitate carry accessories
- MIL-STD-810H drop tested from 5 ft. by SGS
- FDA-grade TPU reinforced corners for impact and shock absorption
- Clear medical-grade polycarbonate shell ensures asset tag visibility
- Precision-fit design with cut-out for built-in device scanner functionality and access to all I/O ports
- Lightweight design reduces bulk
- Quick and easy installation

